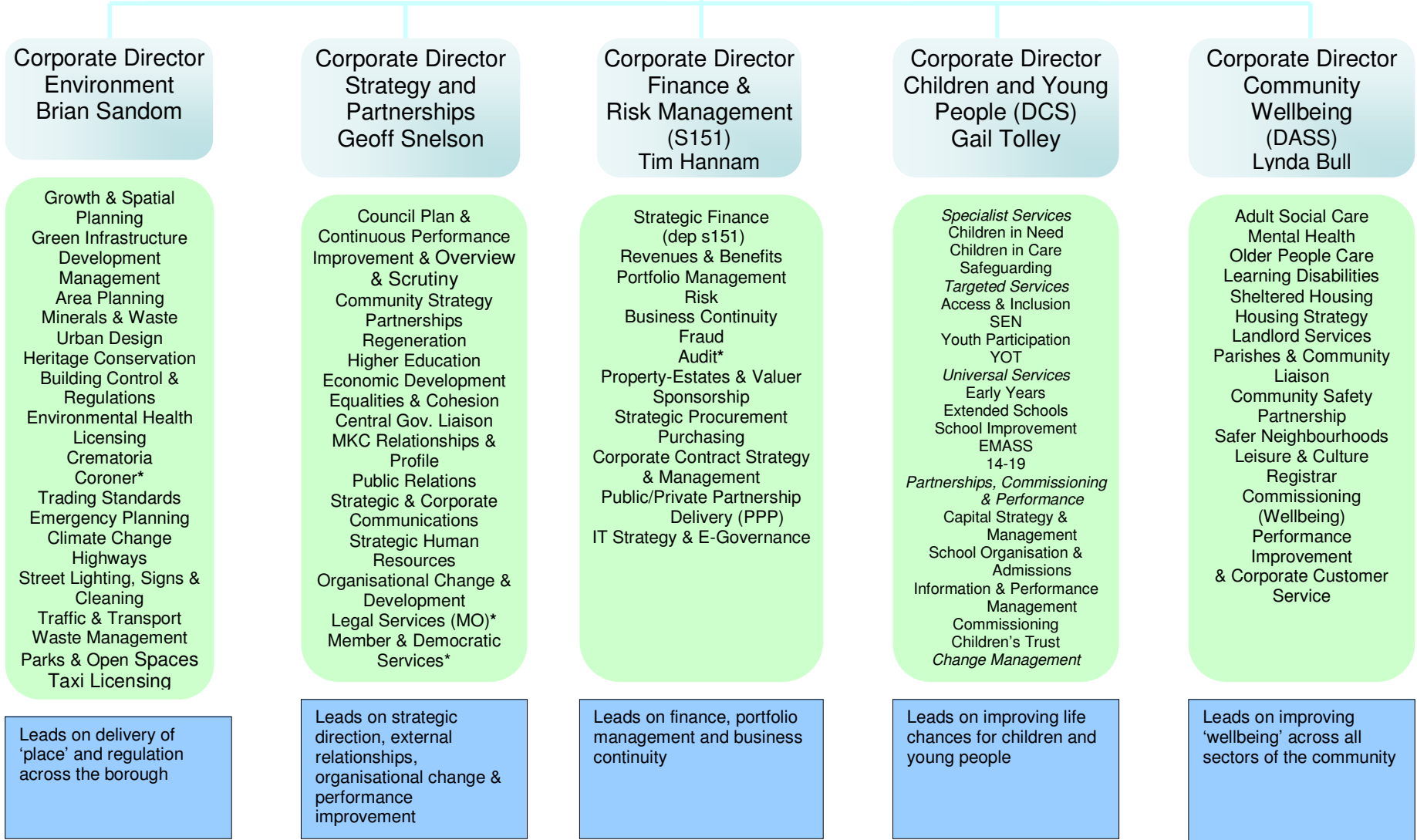


5 October 2009

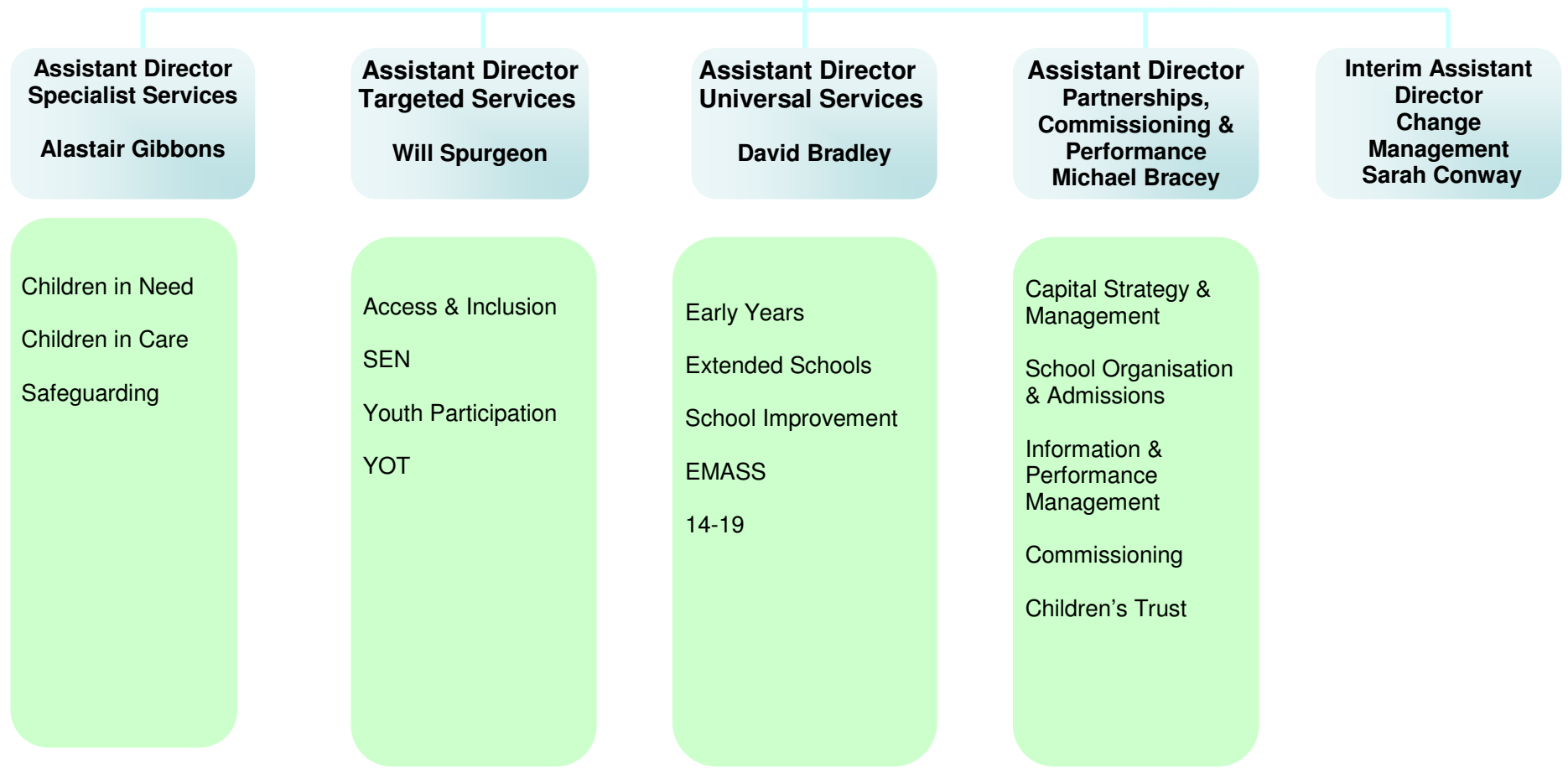
**Milton Keynes Council
Chief Executive
David Hill**



Notes: a) the Director of Public Health# role (not shown above) is as strategic 'critical friend' & has no operational management responsibilities.
b) * senior post has dotted line/direct access to CE (most also hold statutory role) c) # member of the corporate leadership team

5 October 2009

**Corporate Director
Children and Young
People's Service
Gail Tolley**



Leads on improving life chances for children and young people

5 October 2009

**Corporate Director
Finance & Risk
Management
Tim Hannam**

**Deputy
Head of Finance
Gary Waghorn**

Deputy S151
Strategy
Revenue
Capital
Corporate Client
Officer: Financial
Services

**Head of Audit &
Risk Management
Duncan Wilkinson**

Audit
Fraud
Risk Management
Business Continuity

**Head of Property &
Estates
Peter Smettem**

Property
Estates
Valuation
Sponsorship
Corporate Client
Officer: Facilities

**Head of IT & E-Gov
Steven Jewell**

IT and E-Gov
Strategy

Corporate Client
Officer: Information
Technology

**Head of Strategic
Procurement
Mike Hood**

Deputy S151
Strategic
Procurement
Corporate Contract
Management
Public Private
Partnership
Portfolio Office
Corporate Client
Officer: Revenues &
Benefits) strategic
development of the
service)

Leads on finance, portfolio management and business continuity

5 October 2009

**Corporate Director
Strategy &
Partnerships
Geoff Snelson**

**Head of Policy and
Performance
(Vacant)**

**Head of HR
Strategy
Morag Shaw**

**Head of Democratic
Services
John Moffoot**

**Head of Legal
Services
Philip McCourt**

**Corporate
Communications
Manager
Kellie Evans**

Council Plan
Performance Improvement
Community Strategy
LSP & Partnerships
Regeneration
Econ Development
Equalities & Cohesion
Consultation
Higher Education

Strategic HR
People Management Strategy
CLT & Member Support
Corporate Client Officer: Human Resources

Committee Services
Member Services
Overview & Scrutiny
Elections
Electoral Registration
Corporate Client Officer: Business Support

Monitoring Officer
Legal teams
Information Management, Complaints and FOI
Deed Registry
Code of Corporate Governance

MKC Relationships & Profile
Public Relations
Strategic & Corporate Communications
Internal Communications

Leads on strategic direction, external relationships, organisational change & performance improvement

5 October 2009

**Corporate Director
Community Wellbeing
Lynda Bull**

**Assistant Director
Performance
Improvement
Jane Reed**

**Assistant Director
Social Care
Lyn Scott**

**Assistant Director
Housing
David Moore**

**Assistant Director
Commissioning &
Customer Care
Vacant**

**Assistant Director
Leisure Learning
and Culture
Paul J Sanders**

Information and
Knowledge

Performance
Management and
Improvement

Public Information
and
Communication

Strategy and Policy
Development

Corporate and
Partnership
Development

Corporate
Customer Service

Staff Recognition

Business Support

Joint Mental Health
(MKC and MKPCT)

Older People and
Physical Disability

Joint Learning
Disability
(MKC and MKPCT)

Intermediate Care

Homecare, Telecare
and Telehealth
Community Alarm
Sheltered Housing

Social Care Reform

Housing Services

Housing Needs

Projects

(Partnership)
(Home Ownership)
(Lettings)
(Resident Involvement)

*

Community Safety
Safer Communities
Unit
Parish & Community
Liaison

Joint Commissioning
(Older People)
(Drugs and Alcohol
Mental Health)
(Learning Disability)
(Prison)
(Continuing Care)
(Carers)

Social Care
Contracts
(Tendering)
(Monitoring and
Review)

Supporting People

Complaints and
Customer Care

LinKs

Outdoor Education
(Longrigg and
Caldecotte Centres)

Sports and Events
Management

Registrar

Communities and 3rd
Sector Management

Arts Development
Management

Libraries, Learning
and Heritage
Management
(ACE; Libraries;)
(Heritage)

Leisure Services
Management
(Direct provision and
'contracted' out)

* Not yet finalised

Leads on improving 'wellbeing' across all sectors of the community

5 October 2009

Corporate Director Environment Brian Sandom

